

STEP 1: Quick Connection

SLAMTEC MAPPER Development Kit Components: SLAMTEC MAPPER and power cable.



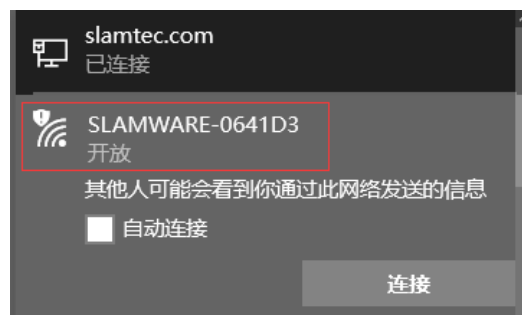
Please put the SLAMTEC MAPPER on a flat surface, and connect to 5V power source with the enclosed power cable.



STEP 2: Start and Connect to the Computer

After the SLAMTEC MAPPER is powered on successfully, the indicator light will light up. SLAMTEC MAPPER will start to spin in about 40 seconds, which indicates the device starts properly.

After startup, you will find the SLAMWARE- XXXXXX WiFi Hot spot.



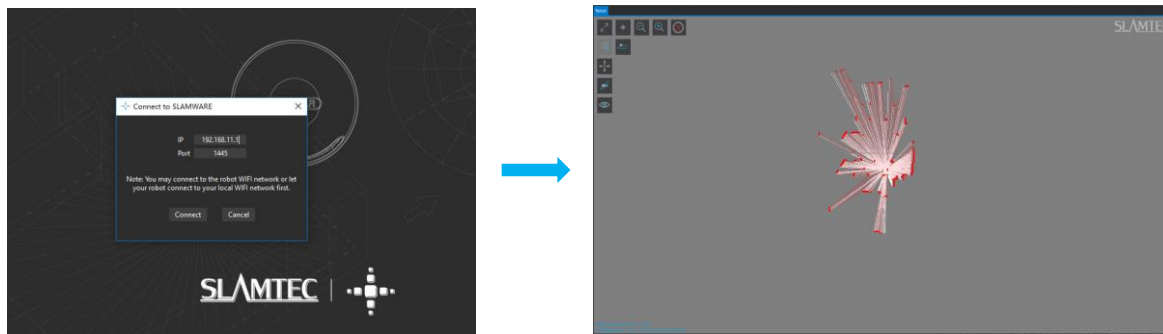
Please connect to the above SLAMWARE- XXXXXX network (you can also connect SLAMTEC MAPPER to PC via Ethernet cable. Please set the network mode as DHCP client).

STEP 3: download the RoboStudio

Please download the Robostudio from our official website:

<http://www.slamtec.com/en/RoboStudio>

And then start the RoboStudio application. Right click at the robots panel and select manual connect. Use 192.168.11.1 for IP address and 1445 for the port (default settings). With a successful connection, the discovered map and real-time laser scan will be shown in the main workspace of the Robostudio.



STEP 4: More Reference

1. For more details of RoboStudio, please refer to the documents in the RoboStudio documents
2. For more usage of SLAMTEC MAPPER Kit, please refer to the SLAMTEC MAPPER User Manual
3. For the electrical characteristics and specification of SLAMTEC MAPPER, please refer to the SLAMTEC MAPPER Datasheet

You can download all the above documents from <http://www.slamtec.com/>, more help please contact support@slamtec.com .